



animalt

Barley malt expert in animal nutrition

animalt

ANIMALT is a trademark of DIFAL society.

DIFAL
125 chemin de la commune
31600 SEYSSES - FRANCE



+33 5 31 22 63 01

www.animalt.fr

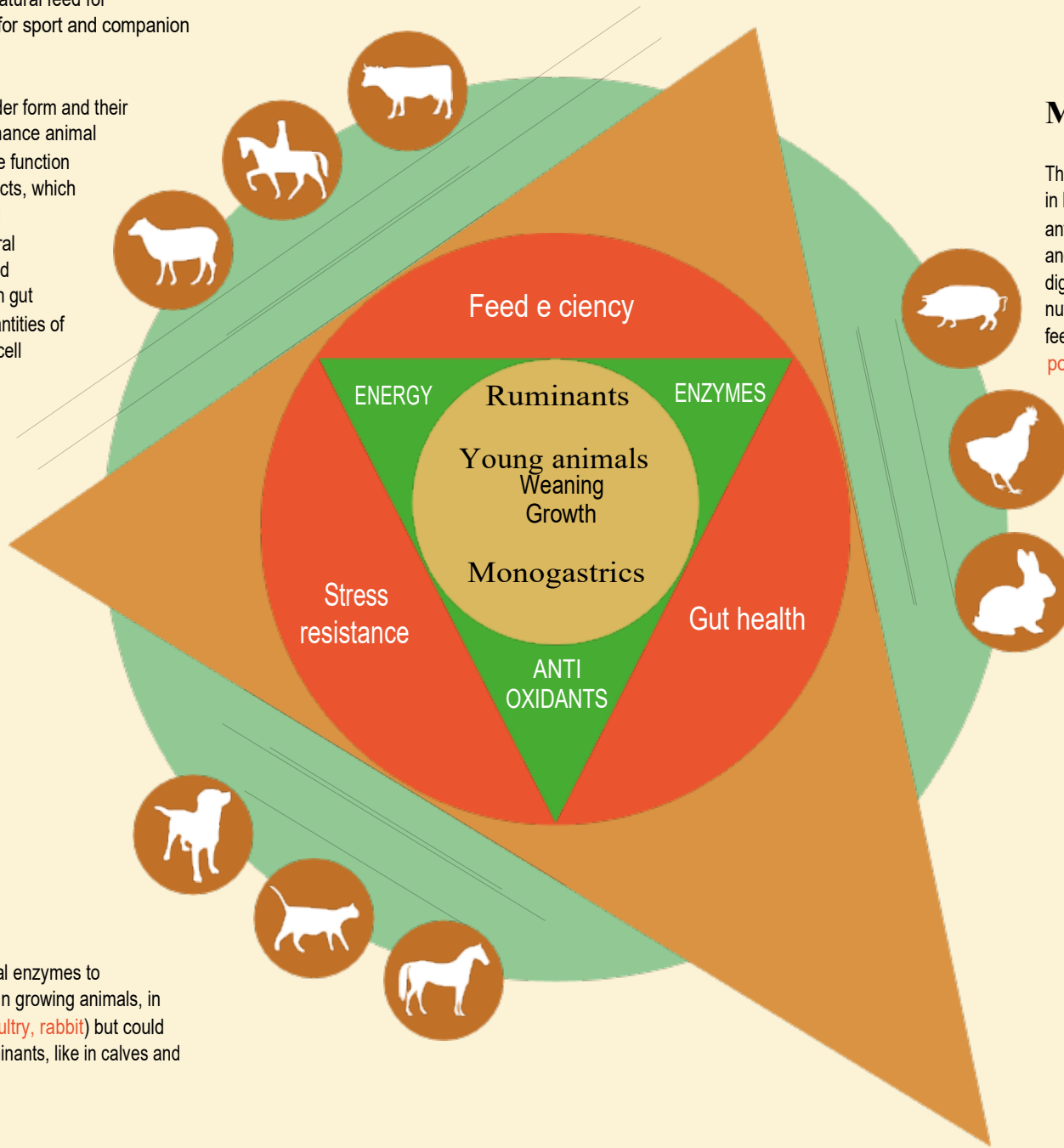
© Pixelista Photo credit: Pixabay - Stockphotos - 07/2015



Products from organic grains
are available.

ANIMALT has developed a range of natural feed for domestic animals, livestock but also for sport and companion animals.

Our feed are available in liquid or powder form and their utilization in animal nutrition could enhance animal performances and well-being. Digestive function is mainly improved through malt products, which notably increase by feed efficiency and gut health. Malt products provide natural vegetal enzymes and rapidly assimilated energy, and have a beneficial effects on gut microbiota. They contain also great quantities of antioxidants combating cell aging and cell damage induced by chronic diseases, and protecting muscular cell during intensive work. Our products are mainly from French cereals and fulfill rigorously the european community standards.



Malt extract

This is a concentrate barley malt extract in liquid or crystallized form, rich in enzymes and antioxidants. It could be used in all domestic species and for all ages, but especially in animals presenting digestive disorders or a fussy appetite, and during nutritionally stress, like weaning or beginning of feedlot breeding. : **dog and cat, horse, pig, rabbit and poultry, ruminant.**

This is a barley malt extract rich in energy and antioxidant, a real energizer and recovery drink for **sport horses**. The long-term preservation allows an easier stock management but decrease enzyme contents.

This is a barley malt extract rich in rapidly assimilated energy, particularly adapted for **ruminant** dams often in negative energy balance around birthing. The long term preservation allows an easier stock management but decrease enzyme contents.



25 kg bucket
300 kg drum
1200 kg container

Malt flour

This is a barley malt flour, rich in natural enzymes to optimize performances and gut health in growing animals, in particular monogastric species (**pig, poultry, rabbit**) but could also be used with success in young ruminants, like in calves and lambs fattening.



Kraft bag lined with PE within 20 and 25 kg
Possibility stainless inbox

